

Develop an approach to address barriers to accessing treatments

**Aim: IMPROVED ACCESS TO TREATMENT & HEALTHCARE**

Improve access to diagnosis, as early as possible

Repurpose and translate materials for adaptation and use around the world



**Aim: POSITIVE CHANGES IN ATTITUDES, POLICIES & PRACTICES**

Develop advocacy tools for national, local and individual action



**TOGETHER WE'RE STRONGER THAN MS**

**Aim: CONFIDENT & INFORMED DECISION MAKING**

Build networks of membership staff and volunteers in communications, care and services



Develop a way to measure the impact of research

**Aim: GREATER SCIENTIFIC UNDERSTANDING & MORE TREATMENTS**



Make substantial progress in the search for treatments



Advance systems for enabling data sharing

Increase funding of MS research by the MSIF movement



Fill gaps in the global MS research workforce

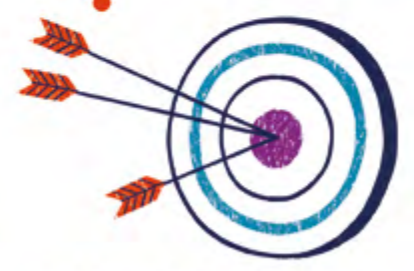


Ensure effective and inclusive international collaborations

**Aim: A STRONGER, BROADER MSIF MOVEMENT**

Strengthen communication and networking across the MSIF movement

Strengthen MS organisations in countries with challenging socioeconomic conditions



Enhance the effectiveness of member organisations and MSIF